

Essential Desktop Security

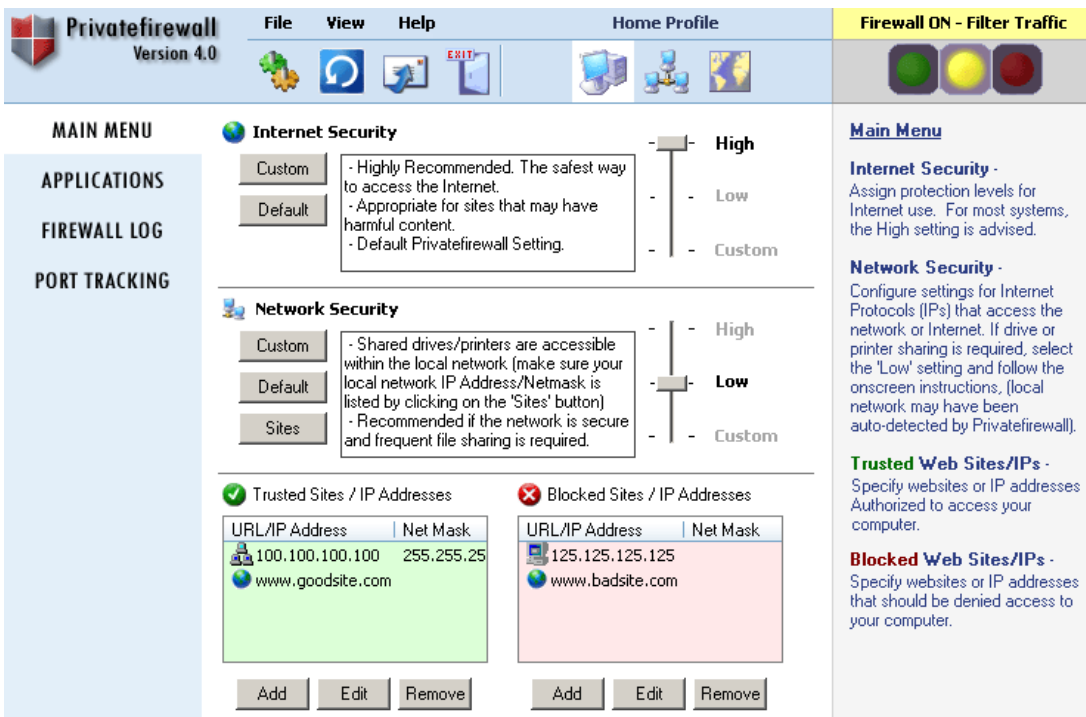
Personal Firewalls have become as pervasive to individual desktops as their more complex network cousins — and just as vital. Connecting to the Internet without one, would be like leaving valuables in a safe without a door. Privatefirewall monitors and allows connections that it knows to be trusted or authorized, preventing spread of worm attacks or theft of data at the desktop level where most of the critical corporate information is created.

Privatefirewall keeps you safe from hackers and other online criminals by eliminating unauthorized access to your PC. Top-rated by reviewers and customers alike, Privatefirewall is simple to use, highly effective, and priced for the value-minded.

What is Privatefirewall?

Privatefirewall 4.0 is a Personal Firewall and Intrusion Detection Application that eliminates unauthorized access to your PC, at home, the office, or on the road. Privatefirewall also constantly monitors the sensitive areas of a PC where intrusion can occur and reports on their status allowing users to take appropriate action. Privatefirewall is easy to install/use and provides reliable and high-performance protection right "out of the box". Privatefirewall's intuitive interfaces allow advanced users to easily adjust default settings to create custom configurations. Features include: Internet traffic (packet) filtering, port scanning, IP tracking, Email Anomaly Detection, Trusted/Blocked URLs, Advanced Application Protection, and Windows XP2 compatibility. Privatefirewall is high-performance desktop security that is affordable, feature-rich and simple to use.

Key Features & Benefits



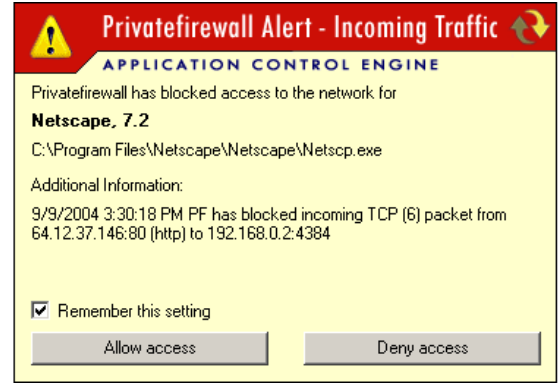
1 General –

- Privatefirewall application presets deliver indispensable protection right out of the box.
- One-click configuration of security settings for Home, Office, and Remote profiles eliminate complicated application tuning.
- Privatefirewall conveniently detects local network connections and automatically sets rules allowing access within that network.
- A variety of custom configuration interfaces are easily accessible for advanced users.

Enhanced User Interface - Privatefirewall 4.0 has a new, improved interface that displays Internet and Network Security settings, Trusted and Blocked IPs/Websites, and the current Firewall Profile all from the main window, providing instant access to important information without navigating through any program menus.

2 Application Detection and Firewall Policy Management –

- Monitor all traffic to and from your PC and prevents trusted applications from being “Hi-Jacked” to steal local or network-accessible files. Privatefirewall automatically opens only the ports necessary for Internet access of a particular application.
- Control which applications can access the Internet, and whether to permit/block every application with each usage or make permissions permanent.
- Establish custom levels of security for specific "Trusted" and "Blocked" IP and Website Addresses — especially useful when different levels of security are required for a specific websites compared to the default "Internet" security level.
- Define application specific or global packet filtering rules that can be applied to incoming, outgoing or bi-directional traffic.



Application Detection - By detecting when an application has been altered since last use, Privatefirewall guards against Trojans, viruses, and spyware that attempt to masquerade as trusted applications and gain entry into your system.

	Time / Date	IP packet from	IP packet to
MAIN MENU	10:07:54 AM 6/23/2004	192.168.0.2:3013	64.55.251.68:25
APPLICATIONS	10:02:04 AM 6/23/2004	192.168.0.2:4891	64.55.251.68:25
FIREWALL LOG	9:58:23 AM 6/23/2004	216.113.188.64:443	192.168.0.2:4878
PORT TRACKING	9:57:35 AM 6/23/2004	216.113.188.64:443	192.168.0.2:4878
	9:57:12 AM 6/23/2004	192.168.0.2:4879	64.55.251.68:25
	9:57:11 AM 6/23/2004	216.113.188.64:443	192.168.0.2:4878
	9:56:59 AM 6/23/2004	216.113.188.64:443	192.168.0.2:4878
	9:56:53 AM 6/23/2004	216.113.188.64:443	192.168.0.2:4878
	9:56:49 AM 6/23/2004	192.168.0.2:4877	216.113.188.64:443
	9:56:49 AM 6/23/2004	216.113.188.64:443	192.168.0.2:4878
	9:56:48 AM 6/23/2004	192.168.0.2:4874	216.113.188.64:443
	9:56:48 AM 6/23/2004	192.168.0.2:4873	216.113.188.64:443
	9:53:15 AM 6/23/2004	216.113.188.66:443	192.168.0.2:4864
	9:53:12 AM 6/23/2004	192.168.0.2:4864	216.113.188.66:443
	9:50:19 AM 6/23/2004	192.168.0.2:4852	216.113.188.66:443
	9:49:03 AM 6/23/2004	192.168.0.2:4845	216.113.188.66:443

Firewall Log – Contains a complete list and detailed information related to all incoming and outgoing packet activity. This is useful for tracking down incoming intrusion attempts to their source.

System Requirements

- Windows 98, ME, 2000, XP Operating System
- Intel processor (>166 MHz)
- 16 MB minimum RAM
- 5 MB of free disk space

About Privacyware

Privacyware is the leading provider of advanced threat prevention and security intelligence solutions. The combination of advanced competencies in non-linear mathematics, neural networks and self-learning systems, and proficiency in complex software and systems development allows us to create innovative and intelligent security solutions that are distinguished by their ease of use, advanced analytic capabilities, and the value they deliver to security staff and the greater enterprise. Privacyware solutions fuel the organization’s ability to make better decisions and remain a step ahead of hackers and others seeking to compromise critical systems.

3 Security & Reporting -

Comprehensive Alert/Attack Information and Reports – Automatically displays pop-up alerts, which include detailed information related to all incoming or outgoing packet activity.

Internet Traffic (Packet) Filtering Security Level Control – Allows simple adjustment of security levels (i.e., High, Low, Custom) depending on the amount of protection required.

Port tracking and reporting – Tracks all ports to prohibit unauthorized port scanning or any other type of intrusion. Generates detailed reports on all port scan attempts and displays instantaneous on-screen alerts.

Stealth Mode – Privatefirewall provides control over the openings to a user's computer. By “cloaking” the computer’s IP address, the PC becomes invisible to the Internet and potential intruders thereby reducing the risk of intrusion or attack.

Email Anomaly Detection – Privatefirewall mitigates the impact of attacks targeting email clients by tracking the amount of frequency of outbound emails providing alerts when there is unusual activity.

“Non-Standard” packet filtering – Privatefirewall blocks non-standard (non-winsock) outgoing packets that are commonly used by hackers to gain access to your system.

Contact Information

Privacyware
130 Maple Avenue
Suite 7B
Red Bank, NJ 07701
732-212-8110 p
732-212-9210 f
info@privacyware.com